

Infant Health in Anne Arundel County

Anne Arundel County Department of Health - Office of Assessment and Planning

March 2018

The Anne Arundel County Department of Health's goal is for all babies in the county to be born healthy and thrive.

For more resources on pregnancy and infant care or to order a baby care kit, go to aahealthybabies.org.

Healthy Start provides case management, home visiting, outreach and other services from community health nurses and social workers to high-risk pregnant women and children up to 2 years old. Referrals are welcome from the private sector. For more information: 410-222-7177.

Data Source:
Maryland Vital Statistics Administration, Birth and Death Certificate Files, 2012-2016.

Department of Health
3 Harry S. Truman Pkwy
Annapolis, MD 21401
www.aahealth.org

Compiled by:
Christina Gray, MS
Epidemiologist
410-222-4224

Births by Race/Ethnicity Anne Arundel County, 2012-2016

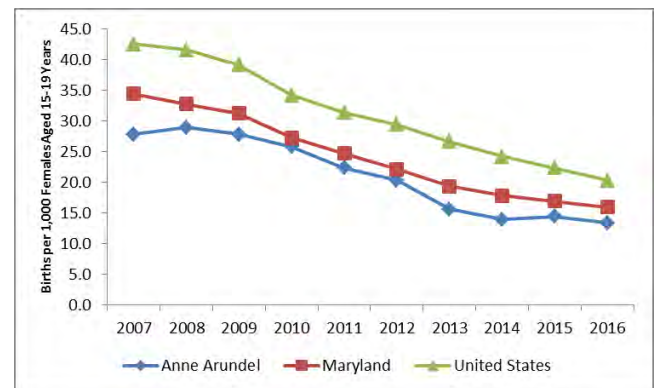
	2012	2013	2014	2015	2016
Total	6,852	6,814	6,968	6,924	6,994
NH* White	4,514	4,399	4,483	4,383	4,357
NH Black	1,195	1,204	1,236	1,259	1,291
Hispanic	782	827	866	847	896

*NH = Non-Hispanic

Although the number of births increased since 2012, the birth rate in the county decreased slightly for all races and ethnicities, due to a rise in the county's female population over the same time period.

Births among Anne Arundel County teens have declined steadily over the past decade, reaching an all-time low in 2016, lower than the state or the nation.

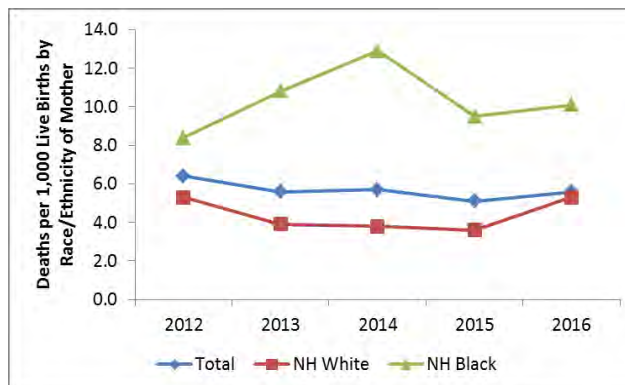
Teen (15-19 Years) Birth Rate Anne Arundel County, 2007-2016



Infant Deaths by Race/Ethnicity Anne Arundel County, 2012-2016

	2012	2013	2014	2015	2016
Total	44	38	48	35	39
NH White	24	17	17	16	23
NH Black	10	13	16	12	13
Hispanic	6	6	3	3	3

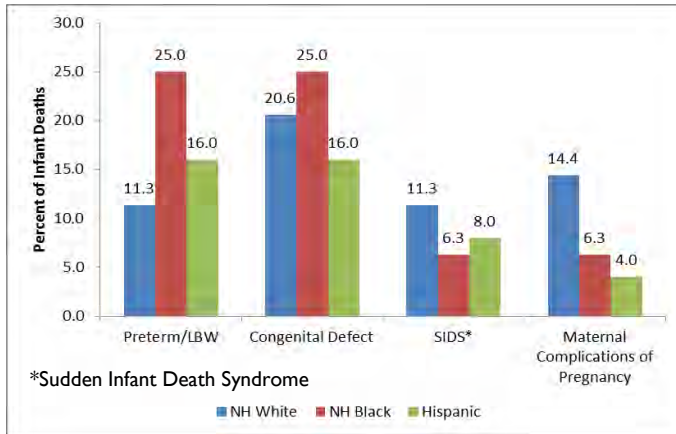
The mortality rate remained highest among non-Hispanic Black infants over the past five years; however, the rate among non-Hispanic White infants increased slightly between 2015 and 2016.



Infant Mortality Rate by Race, Anne Arundel County, 2012 - 2016

NOTE: Rates not calculated for Hispanic as events <10 in numerator.

Causes of Infant Mortality by Race/Ethnicity, Anne Arundel County, 2012-2016



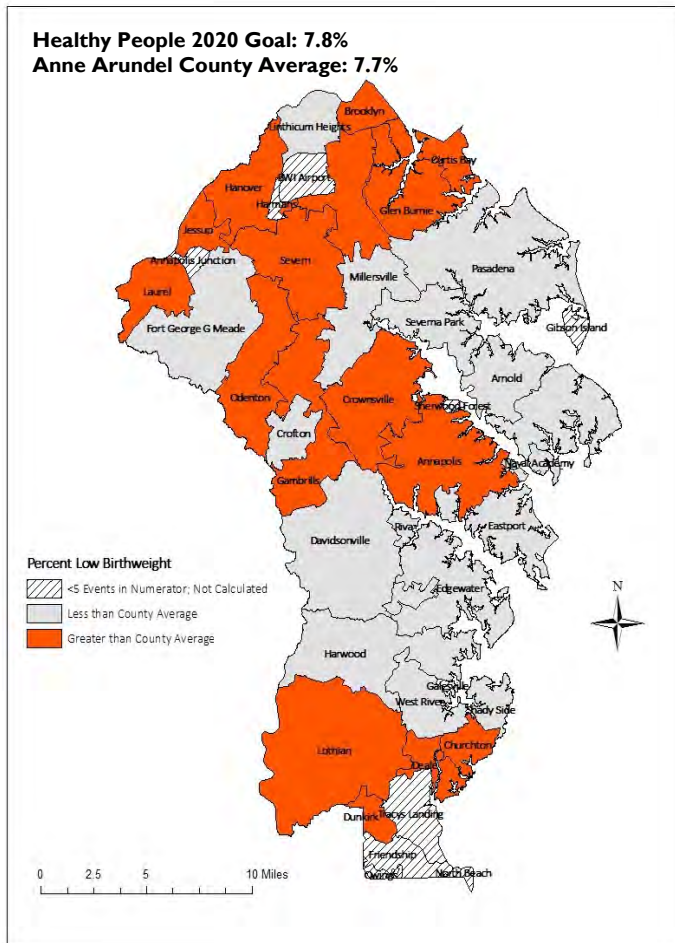
The top causes of infant mortality remained the same between 2012 and 2016, including preterm/low birthweight and congenital abnormalities.

Although the preterm birth rate decreased over the past five years, less than half of Hispanic mothers initiated early prenatal care in 2016, a remarkable decrease from 2012. The preterm birth rate and late/no prenatal care initiation increased among non-Hispanic Black mothers in 2016.

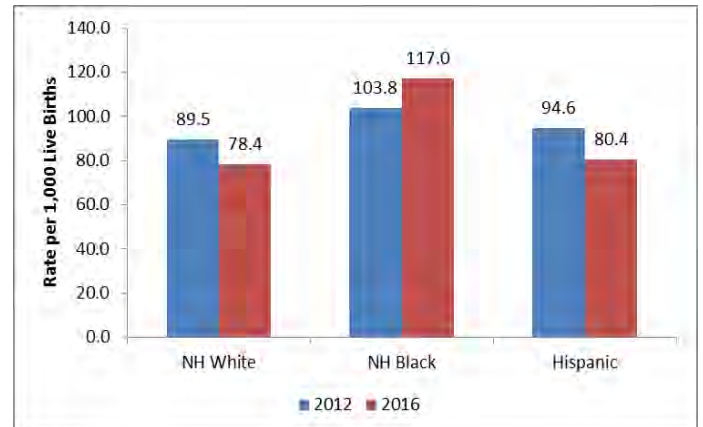
Between 2012 and 2016, the average number of babies born with low birthweight in the county met the Healthy People 2020 goal of less than 7.8%.

Selected Risk Factors for Infant Mortality

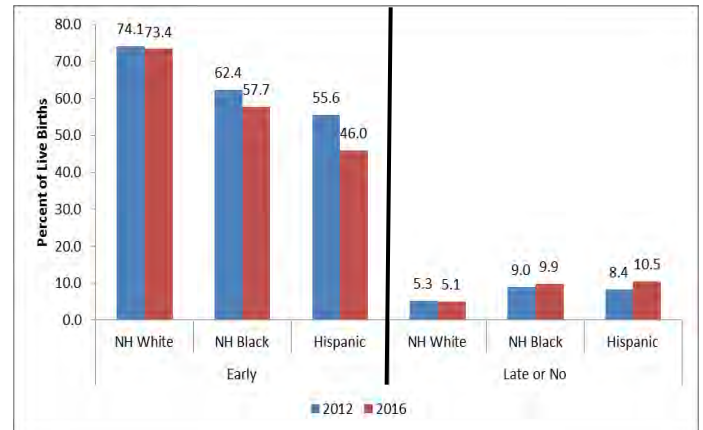
Percent of Low Birthweight Infants by ZIP Anne Arundel County, 2012-2016



Preterm Birth Rate by Race/Ethnicity Anne Arundel County, 2012 vs. 2016



Prenatal Care Initiation by Race/Ethnicity Anne Arundel County, 2012 vs. 2016



Note: Preterm infants are born at less than 37 weeks gestation. Low birthweight infants weigh 5.5 pounds or less at birth. Early prenatal care is initiation during the first trimester (1-3 months); Late prenatal care is initiation during the third trimester.